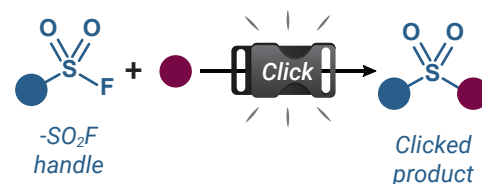


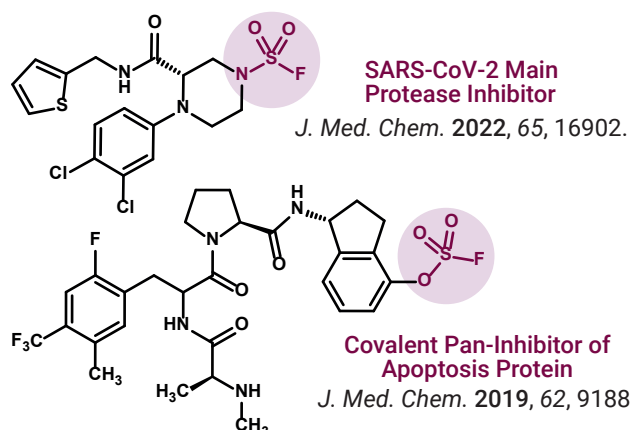
Sulfur-Fluorine Exchange: the second revolution of Click Chemistry

In 2014, Sharpless introduced SuFEx a new family of click connective reactions based on the unique properties of the $S^{VI}-F$ bond to forge new linkages under mild conditions.

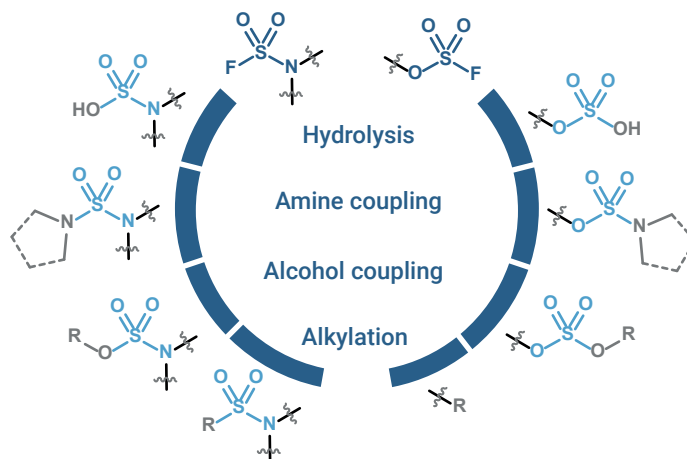


"Spring-loaded" molecules

Covalent warheads



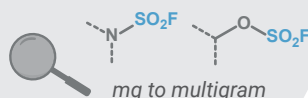
Reactive handles to access multiple functionalities



Our on request service:

Request

- Request the SuFEx products you desire



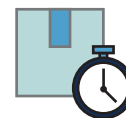
Quotation & preparation

- Reply in less than 48 h
- Your order will be prepared with the requested specifications

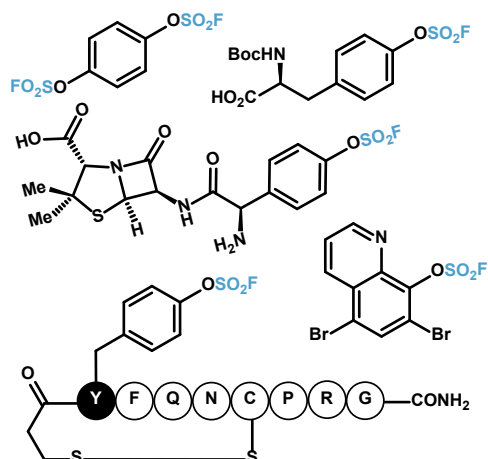


Delivery

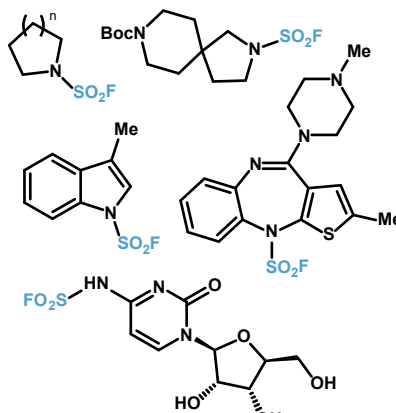
- We ship worldwide with fast delivery to keep your projects on schedule



Fluorosulfates



Sulfamoyl fluorides



SuFEx solutions

We also offer other services based on our expertise in SuFEx click chemistry.

Send us your products or mixtures, and we can install $-SO_2F$ handles or even deliver fully *clicked* products.

We also provide *personalized solutions*, including custom studies and reaction optimization.

